

## DIRECTOR'S NOTE

Agatha Christie wrote *Spider's Web* as a vehicle for the very popular actress Margaret Lockwood. It opened at London's Savoy Theatre on 14<sup>th</sup> December, 1954 and in the half century since this successful opening season the play has continued to delight audiences with its light humour and loveable heroine.

Clarissa Hailsham-Brown, recently married to a man some years her senior, is a devoted wife and stepmother. She is a charming young woman who can make up a story and tell it so convincingly that people believe her, but if she tells the truth it is a different matter. When a murder is committed in her home and she tries to protect the person whom she is convinced committed that murder, what should she do? Tell the truth or tell one of her very convincing stories? How can she best protect those she loves?

In the drawing room of the Hailsham-Brown's country home we meet an interesting variety of recognisable Christie types: Clarissa's devoted godfather; her ever-hungry teenage step-daughter; a respectable local JP; a pleasant young man who is secretary to a London financier; a snooping butler; a husband in the Foreign Office; a hearty lady-gardener; a nasty drug dealer. With secret panels and secret drawers, an important foreign dignitary expected and a dead body to be concealed, this is the stuff of a good Christie whodunnit.

It would be a mistake to take the play out of its 1950s setting. The male-female relationships of the period, the Cold War references, the cost of living and that post-war wish for "normality" are all such an integral part of the play that to set it in any other time-period would interfere with its charm.

This year the Genesian Theatre has chosen plays that pose the question "What is love?" In this play we look at the behaviour of those who wish to protect those they love, and the lengths to which people will go to shield their loved ones from harm.

We hope that you will enjoy spending the evening in the company of Clarissa Hailsham-Brown. You may even figure out "whodunnit" before the harassed Inspector Lord and his faithful constable make an arrest.

**Pamela Whalan**

Visit the Genesian website for all the latest news and information:

<http://www.genesiantheatre.com.au>

our next production....

# GASLIGHT

BY

**PATRICK HAMILTON**

This classic tale of murder, greed and deceit is guaranteed to keep you on the edge of your seat

Directed by Joyce Birch

Opens November 9th 2002

Looking ahead.....

Coming in January 2003

"Two Weeks With The Queen"

And March 2003

Shakespeare's "King Lear"

Pick up one of our subscription season brochures in the foyer for details of all the exciting productions coming soon to Genesian.

**GENESIAN THEATRE Inc**  
420 Kent St Sydney

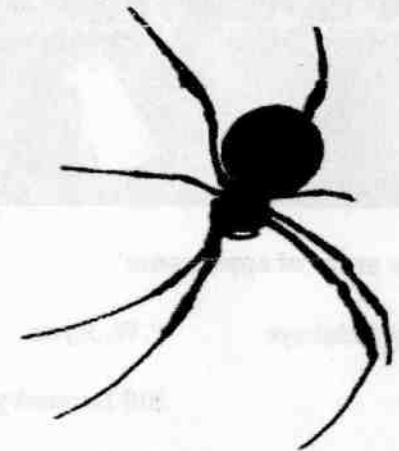
By special arrangement with Dominic Pty Ltd  
presents

# SPIDER'S WEB

BY

**AGATHA CHRISTIE**

DIRECTED BY PAMELA WHALAN



14th September to 26th October, 2002

Friday, Saturday 8.00pm,  
Sunday 4.30pm

For Bookings call MCA ticketing  
(02) 9645 1611  
online [www.mca-tix.com](http://www.mca-tix.com)



**CAST - in order of appearance**

Sir Rowland Delahaye	P.W. Ryan
Hugo Birch	Bill Lamonby
Jeremy Warrender	Geoff Hacker
Clarissa Hailsham-Brown	Kim Mia Smith
Pippa Hailsham-Brown	Emma Warren
Mildred Peake	Robyn Williams

Elgin	Steve Andrews
Oliver Costello	Joe Klein
Henry Hailsham-Brown	Paul Gilbert
Inspector Lord	Timothy Bennett
Constable Jones	Steve Vasquez



The action of the play takes place in the drawing-room of Coplestone Court, the Hailsham-Browns' home in Kent in the mid 1950s.

**CREW**

Designer	Grant Fraser
Lighting Design	Eric Bicknell, Matthew Ryan
Sound Design	Jane Kempler
Stage Managers	Diane Henderson, Cheryl Lawson
Lighting Operator	Lloyd Williams
Sound Operation	Sarah Morrissey, Matthew Ryan
Costume	Pamela Whalan, Tanya Catelli
Set Construction	Grant Fraser, Paul Gilbert and Genesian Members
Set Detailing	Steve Andrews
Publicity	Roger Gimblett and Committee
Graphics & Photography	BoxTree Design

**SYNOPSIS OF SCENES**

ACT 1:	An evening in March	
ACT 2:	Scene 1	5 minutes later
	Scene 2	10 minutes later
ACT 3:	A few minutes later	

There will be an interval of ten minutes between each act.